

HGP Open Part Number	Schematic Drawing #	Approx Weight (LBS)
HGP0030AW0S000#	29597-S	81
HGP0030AW0C000#	29597	85
HGP0030AW0C*00#	29597-PQ	88

HGP Part Number	HorsePower (HP)	Maximum Amps (A)	kVar	Harmonic	Voltage (V)	Hz.	Phase
HGP0030AW----	30	40	10	5th	480	60	3

HGP Enclosed Type 1 Part Number	Schematic Drawing #	Approx Weight (LBS)
HGP0030AW1S000#	29597-S	145
HGP0030AW1C000#	29597	150
HGP0030AW1C*00#	29597-PQ	151

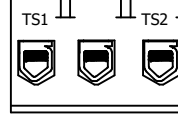
***=Communication Option**
0= No Connectivity
1= PQconnect w/Modbus RTU over RS485
2= PQconnect w/EtherNET

#=Mechanical Option
0= No Option
V= Vibration Pads
T=Thermal Switches

Note: For Torque Information See IOM Manual
 Customer Connections.
 L1, T1, L2, T2, L3, T3
 Wire Range: 1 AWG to 22 AWG.

Ground Lug
 Wire Range: 1/0 to 14 AWG.

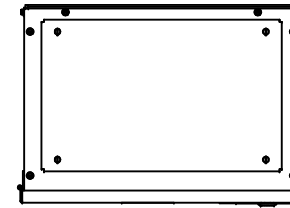
Thermal Switch, Terminal Block (Optional) Located on Inductors



Wire Range: 18 AWG To 4 AWG.
 Torque: 20 LB-IN (2.3 Nm)

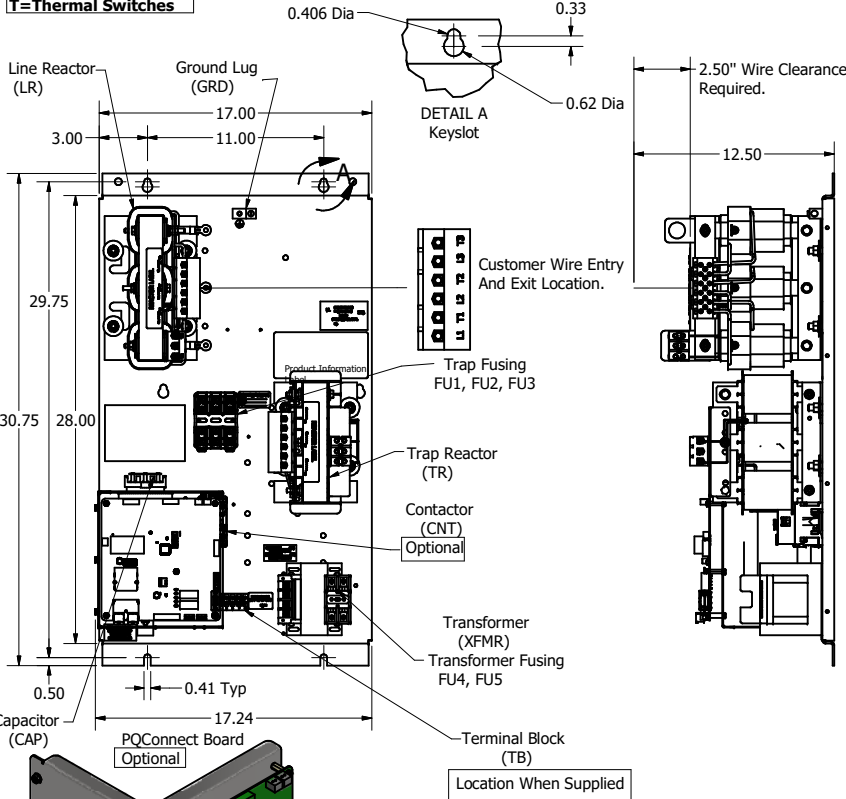
Switch Opens on Temperature Rise
 Contact Rating: 6A @ 120 VAC, Resistive
 Contact Rating: 5A @ 120 VAC, Inductive

Top of Enclosure



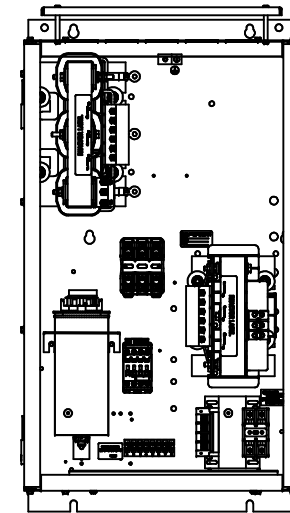
***=Communication Option**
#=Mechanical Option

Suggested Area, For Customer Wire Entry And Exit Location.

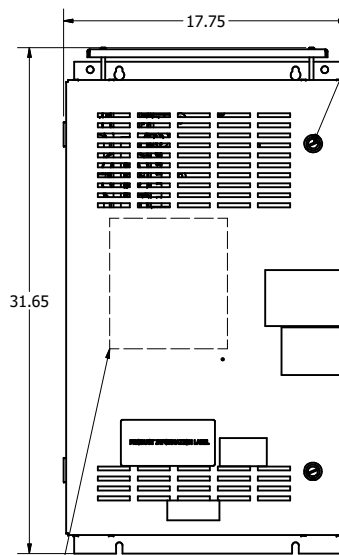


1/4 Turn Latch
 2 Places

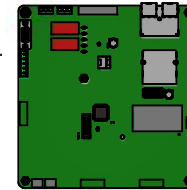
Front View Without Door



Front View With Door

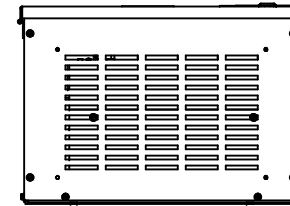


PQConnect Board Mounted on Front Door Of Enclosure. Optional



UL Required Shields
 3 Places.

Bottom of Enclosure



Note: Customer is responsible for proper cooling of filter components on open panels. Capacitors Maximum Ambient 50°C.

	HGP0030AW----			
Components	0S000#/1S000#	0C000#/1C000#	0C*00#/1C*00#	
Line Reactor (LR)	X	X	X	
Trap Reactor (TR)	X	X	X	
Capacitor (Cap)	X	X	X	
Trap Fusing, FU1, FU2, FU3	X	X	X	
Contactor (CNT)		X	X	
Transformer (XFMR)		X	X	
XFMR Fusing, FU4, FU5		X	X	
PQConnect Board			X	

THE INFORMATION AND DESIGNS CONTAINED IN THIS DRAWING ARE CONFIDENTIAL AND THE PROPRIETARY PROPERTY OF ALLIED MOTION TECHNOLOGIES INC. AND ITS SUBSIDIARIES. NEITHER THIS DESIGN NOR ANY INFORMATION CONTAINED IN THIS DRAWING MAY BE REPRODUCED OR DISCLOSED TO OTHERS WITHOUT THE EXPRESS WRITTEN CONSENT OF ALLIED MOTION TECHNOLOGIES INC. AND ITS SUBSIDIARIES.

REV	DESCRIPTION	DATE	BY	TOLERANCES (EXCEPT AS NOTED)
H	6608, Update Xfmr PTP	03/1/2024	JRN	DECIMAL
G	6481 Add PQMech options	11/08/2023	JRN	.XXX ± .25 .XXX ± .10
F	5677 UPDATE PTP TO T2	08/03/21	JRN	FRACTIONAL
E	5662, ASC to Vishay Cap	7/16/2021	DSW	± 1/32
D	4760, Add Harness Package	5/24/19	DSW	ANGULAR
C	PQConnect Board Added.	6/14/18	DSW	± 1°
NO	REVISION	DATE	BY	

Customer Is Responsible For Installation to Meet All National And Local Electrical Codes.

Material(s) Shall be RoHS Compliant

W132N10611 (Rev 1) 11/15/20
 Germantown, WI 53012
 © 2023 TCI, LLC
 An Official Motion Company
 HarmonicGuard Passive, HGP0030AW----
 HGP, 30HP, 480/3/60, Open and Type 1.
 DWN BY: DSW DATE: 10/31/13 FILE: 105482DG
 SCALE: 1/8 DRAWN BY: CSE SHEET 1 OF 1